



*Gold*



*Copper*



*Silver*

# Corporate Presentation

February 2026

# Disclaimer

Some of the statements contained in this presentation may be deemed “forward-looking statements.” These include estimates and statements that describe the Company’s future plans, objectives or goals, and expectations of a stated condition or occurrence.

Forward-looking statements may be identified by the use of words such as “believes”, “anticipates”, “expects”, “estimates”, “may”, “could”, “would”, “will”, or “plan”. Since forward-looking statements are based on assumptions and address future events and conditions, by their very nature they involve inherent risks and uncertainties.

Actual results relating to, among other things, results of exploration, reclamation, capital costs, and the Company’s financial condition and prospects, could differ materially from those currently anticipated in such statements for many reasons such as but not limited to; changes in general economic conditions and conditions in the financial markets; changes in demand and prices for the minerals the Company expects to produce; litigation, legislative, environmental and other judicial, regulatory, political and competitive developments; technological and operational difficulties encountered in connection with the Company’s activities; and changing foreign exchange rates and other matters discussed in this presentation.

Persons should not place undue reliance on the Company’s forward-looking statements. Further information regarding these and other factors, which may cause results to differ materially from those projected in forward-looking statements, are included in the filings by the Company with securities regulatory authorities. The Company does not assume any obligation to update or revise any forward- looking statement that may be made from time to time by the Company or on its behalf, except in accordance with applicable securities laws, whether as a result of new information, future events or otherwise.

The TSX Venture Exchange has not reviewed and does not accept responsibility for the adequacy or accuracy of the contents of this presentation, that has been prepared by management.

Robert Macdonald M.Sc., P.Geo., is the *Qualified Person* responsible for reviewing the technical information presented herein.

# About Paradigm

## Contact

### Head Office:

Paradigm Gold Corp.  
Suite 1100, 1199 West Hastings St.  
Vancouver, BC V6E 3T5

### Investor Relations:

Direct: 604.641.2759  
Fax: 604.684.0642  
Email: [corpdev@mxltd.com](mailto:corpdev@mxltd.com)

Website: [www.paradigmgoldcorp.com](http://www.paradigmgoldcorp.com)

Auditors: Smythe Ratcliffe LLP

## Share Structure

Shares Outstanding: **10.9 million**  
Fully Diluted: **12.1 million**

## Share Listings

TSX.V : PDQ  
FRANKFURT : C5N

## Directors & Management

John R. Kerr - President & Director  
Lawrence Page, KC - Chairman & Director  
Matt Anderson CPA, CA - Chief Financial Officer  
Arie Page - Corporate Secretary  
Killian Ruby CPA, CA – Director  
Joseph A Kizis, Jr., BSC, MSc, P.Geo - Director  
Brian McGrath, BSc - Director & Audit Com. Chair

# WHY INVEST IN PARADIGM?

- Experienced management and exploration team with a history of success
- Aggressively pursuing projects to increase shareholder value
- Flagship Property – Swift Katie Cu/Au Property, excellent location, access and infrastructure with high quality drill ready Cu and Au targets
- \$750,000 drilling and surface program planned for Q2/Q3 2026
- Target of +2Moz Au<sup>(1)</sup> High-Grade Gold System similar veins found in the Rosslund Camp; Phase I drill program successfully identified two shallow gold zones – Phase II drill program proposed to follow-up and expand on Au mineralization

*Drilling At Swift Katie*



**2017 Core from Swift Target – 2.5m (downhole) of 11.5g/t Au @ 23.5m in SQ17-015**

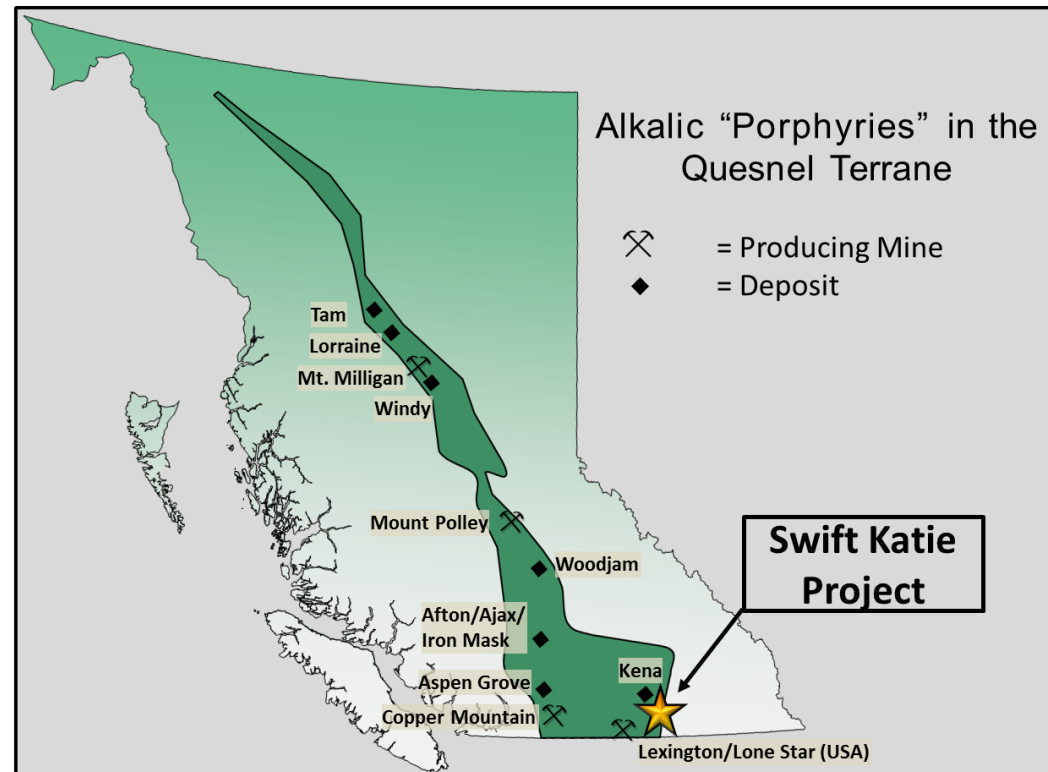


*(1) The exploration target is conceptual in nature, based on current and historic geological data and relies on projections of mineralization that are beyond the standard CIM classification of mineral resources and should not be relied on as a mineral resource estimate. There is no guarantee that further exploration will result in the target being delineated as a mineral resource.*

# Swift Katie Porphyry/Epithermal Project, BC

## “LOCATION, LOCATION, LOCATION”

- Large Land Package @ >83 km<sup>2</sup>
- Excellent Location, Infrastructure & Access
- Year-Round Exploration Advantage
- Politically Stable & Tax Friendly Incentives
- **Swift Zone:** Au-Ag-Cu epithermal target hosted in NE-SW trending structures.
  - Possible analogue to nearby Rossland Mining District (+2.7Mozs Au production)
  - 2017 Swift Target, near surface drill results:
    - 11.5g/t Au & 6.7g/t Ag over 2.5m;**
    - 1.1g/t Au & 0.5g/t Ag over 22.6m; and**
    - 3.1g/t Au, 2.0g/t Ag over 8.6m.**
- **Katie Zones:** Cu-Au-Ag porphyry deposit
  - Similar to the producing Copper Mountain Mine at Princeton BC.



# Swift Katie - Regional Setting

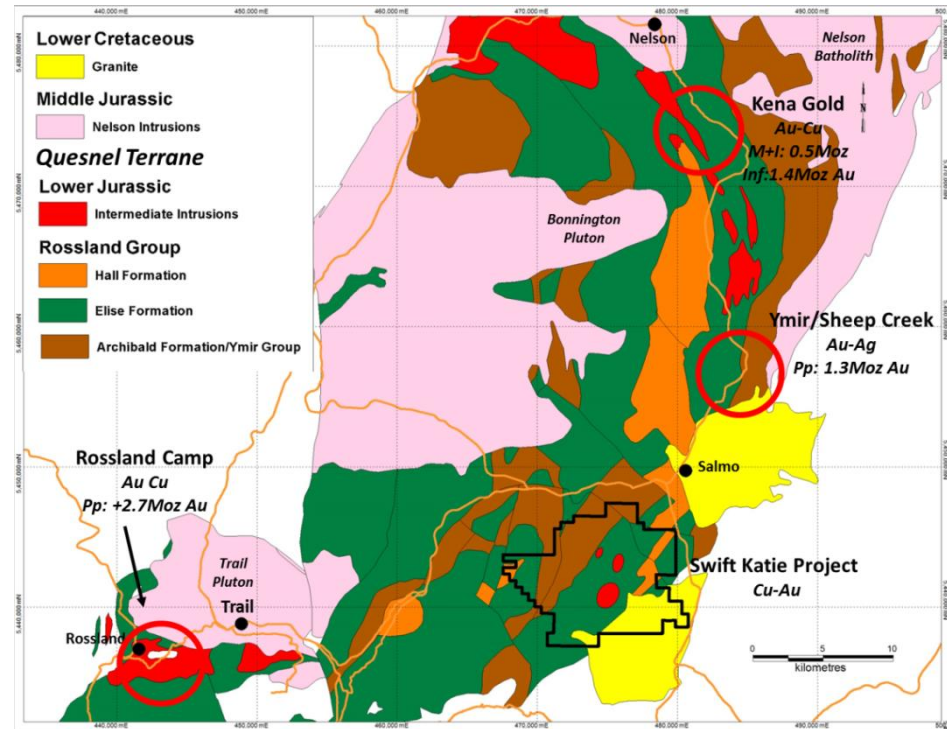
“The Golden Arc” – A Productive Mineral Belt on the Edge of Ancestral North America

## History

- 1980's & 1990's explored by Noranda & Falconbridge.
- Over 80 drill holes targeting 5 zones (+20,000m):  
Katie deposit footprint = +500m (L) x 70m-135m (W)

## Modern Evaluation & Exploration

- Amalgamation of the Katie & Swift properties
- 100% ownership by PDQ: ~\$3.5M invested in exploration since 2006.
- **Katie:** Three drilled zones within a porphyry deposit; open laterally and at depth.
- **Swift:** 2.5km long gold-mineralized altered structural corridor to be drill tested.
- Claims in good standing to 2027.



# Swift Katie Project

## Three Known Deposits in the Katie Target and Exploration Upside at Swift

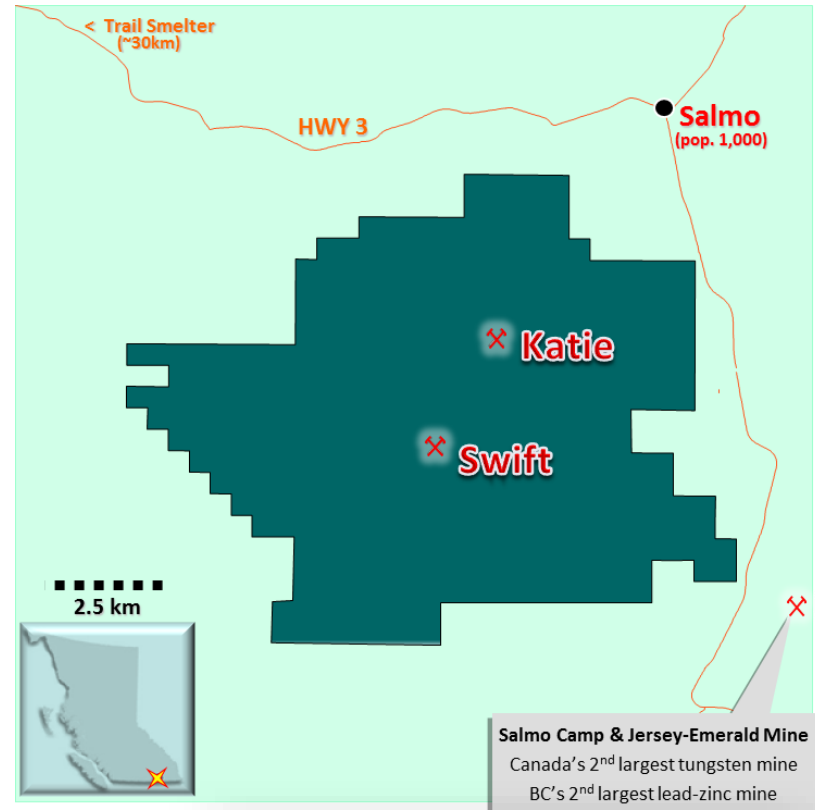
The Katie Cu-Au zones have historically received much of the exploration focus on the property.

New Targeting in the Swift Target Area reveals untapped potential

*Work over the last several years has advanced targeting on the Swift area of the property including:*

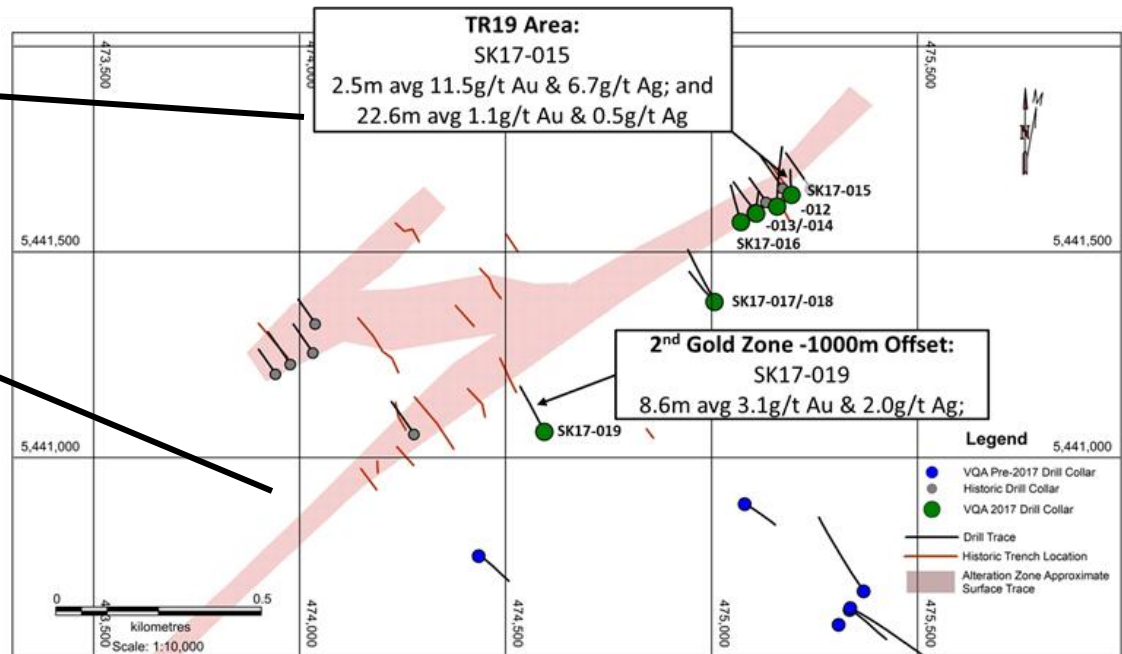
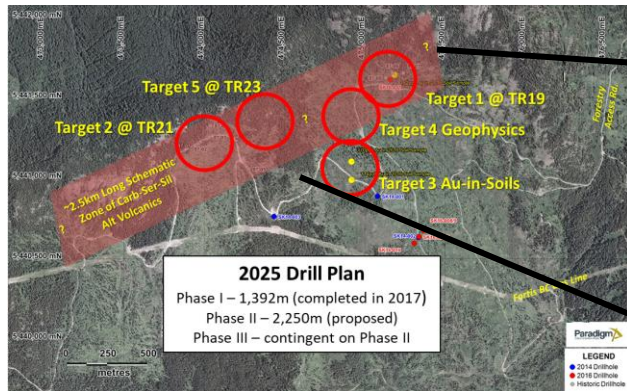
- *Identification of a 2,500m long carbonate-sericite-quartz altered and gold mineralized structural zone*
- *Wide-spread Cu-Au soil and rock anomalies throughout the target area*
- *Shallow drilling returns both high grade intervals and thicker “bulk-mineable” grade gold mineralization*

*Currently, five priority targets are identified over a 2,500m strike-length*



# Swift Katie Project - Swift Target Area

## 2017 Drilling



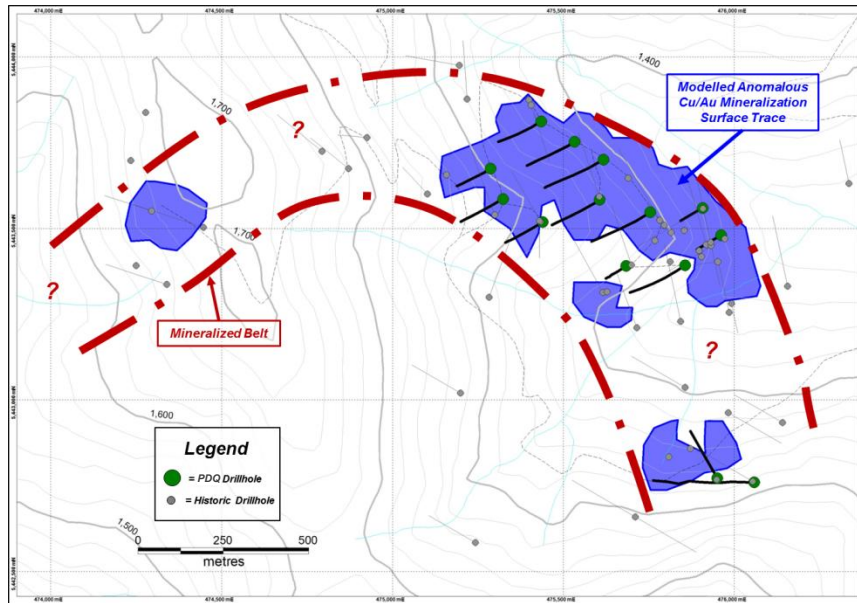
**Primary Target:** +2.5km long x 0.5km wide ‘Alteration Corridor’ of intense carbonate-silica-sericite alteration and gold

**Objective:** Define economic, near-surface exploitable indicated/inferred gold-silver resources, at low-cost

- Five drill targets are currently identified
- Phase I drilling tested the “TR19” area which previously returned anomalous trenching, soil & drill results and successfully identified two shallow gold zones in drilling approximately 1000m apart including:
  - **11.5g/t Au & 6.7g/t Ag over 2.5m;**
  - **1.1g/t Au & 0.5g/t Ag over 22.6m; and**
  - **3.1g/t Au, 2.0g/t Ag over 8.6m.**

# Katie Target Area

>1,500m Mineral Zone Strike / Open in Several Directions

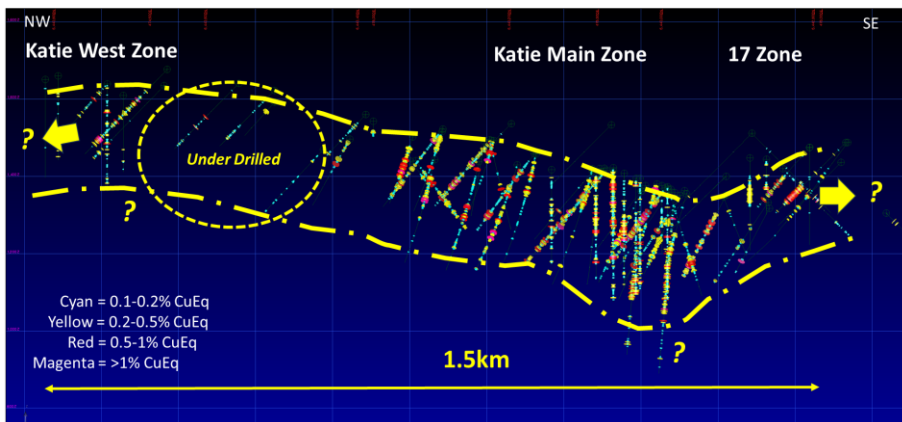


## Katie Target Highlights

- Alkaline porphyry system. Three deposits within a 2.5km x 1.75km area identified to date
- 72 drill holes identified widespread accumulation of Cu-Au mineralization
- Open along strike and down dip with ~1.5km untested in between deposits
- Several additional highly prospective geochemical and geophysical targets remain to be tested

## Katie Drill Highlights

- **NKT-91-13**: 83.1m of 0.28% Cu, 0.33g/t Au
- **VKT07-060**: 48.8m of 0.18 % Cu, 0.16g/t Au incl. 45.4m of 0.23% Cu, 0.27g/t Au
- **VKT08-069**: 101.5m of 0.19% Cu, 0.12g/t Au incl. 12.8m of 0.43 % Cu, 0.15g/t Au
- **VKT08-064**: 95.0m of 0.19% Cu, 0.11g/t Au
- **VKT08-071**: 64.0m of 0.16%Cu, 0.29 g/t Au



CuEq Prices calculated using US\$2600/oz Au and US\$4.30/lb Cu assuming 100% Recoveries

# ***Swift Zone – 2025 Exploration***

Phase I Complete, Phase II Proposed Q4 2025

## ***Next Phase of Exploration: projected Budget - Cdn\$750,000***

- Aggressive surface mapping and sampling program to further delineate current gold mineralization and generate new drill targets from key underexplored target areas
  - Budget - \$100,000
- Phase II drill program to offset gold mineralization at TR19 and in area of SK17-019
  - 2,000m of NQ2 diamond drilling proposed
  - Budget - \$600,000
- Exploration drilling in other priority target areas based on results of surface program
  - 250m of NQ2 diamond drilling proposed
  - Budget - \$50,000

# *Paradigm Gold Corporation*

## Project Summary

- Swift Katie Property permitted (5yr extension application in process) and in historically productive district with excellent infrastructure
- Located in the 'Golden Arc' of British Columbia, Canada
- Katie Cu/Au Porphyry Target with historically drilled footprint of 2.5km x 1.75km
- Swift Au Target – High Grade Gold Drilled within +2.5km trend, up to 500m wide with very limited drill testing
- Property remains underexplored with good prospects for additional discoveries

### Proposed Exploration

- **Swift:** 2,000m Phase II exploration/drilling - **Proposed budget:** Cdn\$750,000